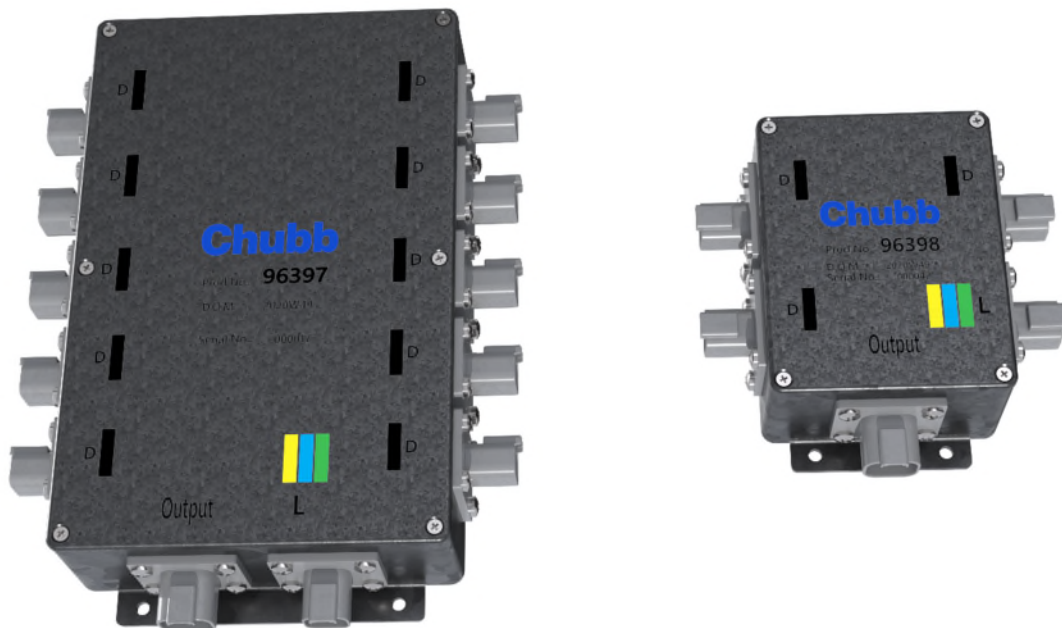


PEFS Junction boxes

Protecting your world

A PEFS Junction box is used to connect pressure switches from multiple PEFS LOP cylinders and provide a single output for connection to a fire control and indicator panel.



Part numbers

- 96397 - Large Junction box. Suitable for connecting up to 10 x PEFS LOP cylinders.
- 96398 - Small Junction box. Suitable for connecting up to 3 x PEFS LOP cylinders.

Features

- Deutsch connectors with permanent encapsulation.
- No internal connections required.
- External flange mounts
- Supplied with matching connectors and blanking plugs for unused Inputs.
- Labelled and colour coded Inputs/Output for easy identification.
 - “D” = Discharge confirmation switch input
 - “L” = Low pressure monitoring switch input

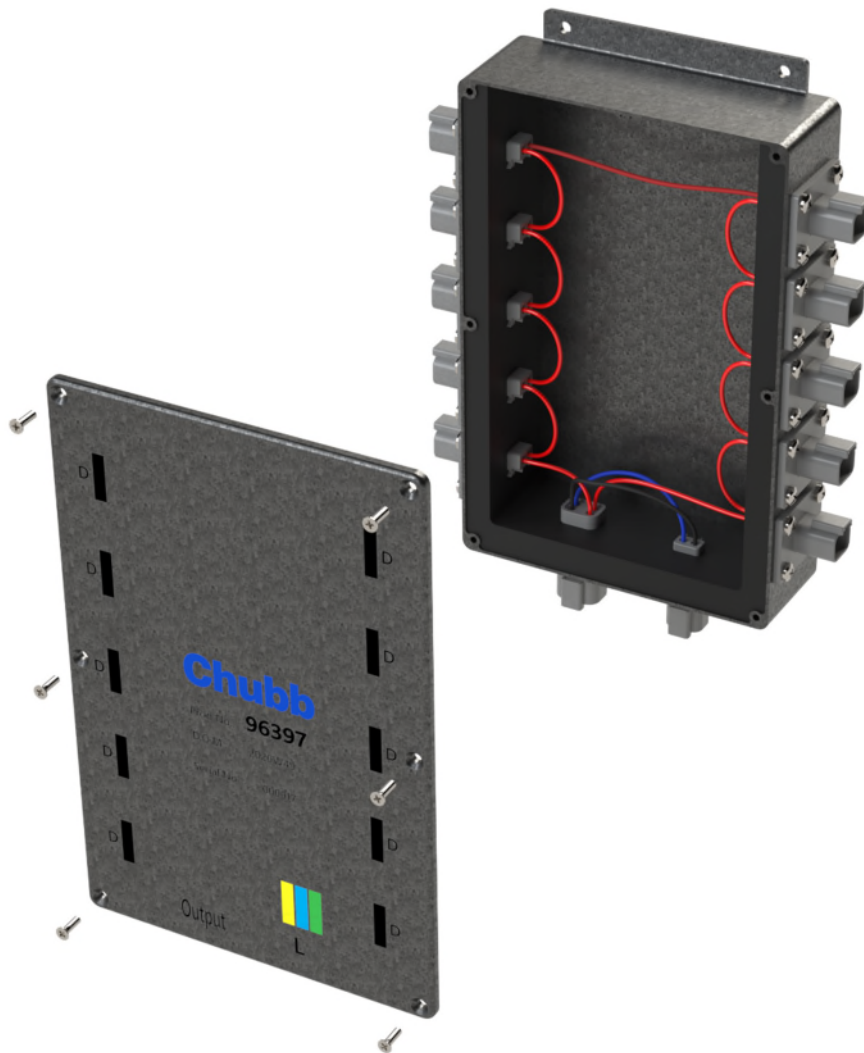
Specifications

Enclosure Material	Aluminium alloy ADC-10
Enclosure IP rating	IP66
Output Connector type	DT04-4P-L012 with mating DT06-4S-E008
Input Connector type	DT04-2P-L012 with mating DT06-2S-E008
Connector IP rating	IP68
Fasteners	M5 20mm Socket head bolts with Nyloc nut and washers
Fastener Material	304 Stainless Steel

Call **13 15 98**
chubbf.com

Internal “series” wiring

- 96397 - Large junction box



- 96398 - Small junction box.

